

Pitt Academy Annual Report 2015

Pitt Academy Mission Statement

History

Pitt Academy, formerly Ursuline Pitt School, was founded by Monsignor Felix Newton Pitt in 1949 to provide education and training for children who were unable to profit from the traditional methods of regular classroom instruction, because of learning problems.

His innovative ideas included special help in reading, writing, and math in resource-type rooms; assistance for the classroom teachers in dealing with children with special needs; and the opportunity for children with special needs to succeed in the school environment.

For over 60 years, in our little school, the core mission of Monsignor Pitt has thrived and adapted. The world has changed around us and we have changed with it, but the need for a safe, secure and loving individualized education for special needs children is as critical today as it was in 1949.

Mission

Pitt Academy is a fully accredited, independent school with a non-denominational enrollment policy, serving students with learning differences in a gradeless elementary through secondary setting. We believe in individualized instruction and a low student/teacher ratio. Our students are accepted for who they are and we modify the curriculum to meet the individual needs of the child.

At Pitt, we expect a lot more from our students and we provide an environment in which they can succeed. Pitt provides a secure space for special needs children to realize their full potential, be independent and productive members of society. We are a community of learners supported by caring and dedicated teachers, administrators, staff, parents and resource people who strive to make “community” not simply a concept to be taught, but a reality to be lived and experienced daily.

Philosophy

Pitt Academy seeks to:

- Provide specialized educational instruction to maximize each student’s potential.
- Help each student develop confidence, self-esteem and appropriate social behaviors.
- Train hearts and minds.
- Prepare each student to become independent through life skills instruction.
- Expect more from children, despite their challenges.
- Provide a safe and nurturing school environment.

Core Beliefs

At Pitt Academy, we believe that our students can:

- Be responsible for their own actions and behaviors.
- Be positive in attitude and effort.
- Be respectful of each other's individual differences and worth.
- Be positive role models.
- Be independent.
- Be respected, listened to and heard.

School Website: www.pitt.com



2014-2015 Program Highlights

- Therapies** – For the third consecutive year Pitt Academy has continued to strengthen our partnership with Associates in Pediatrics Therapy to provide a range of therapies for the families at Pitt Academy. Through this partnership, Pitt Academy and Associates in Pediatric Therapy have been able to help many Pitt Academy families obtain a range of needed services through the Michele P. Waiver program and other funding sources. In addition, several of the Pitt Academy Staff continue to work outside of school with students through serving as certified Community Supported Living workers. In the coming year we hope to continue these efforts and further broaden both the range of service options open to families and to provide an information resource for the families to obtain access to programs and services for their children with special needs.



- Grants** – Pitt Academy would like to sincerely thank each of the organizations that contributed to our mission over the past school year. The following organizations provided grant funding to Pitt Academy or have pledged funding for the upcoming school year



- Capital Campaign** – Last year the Board officially launched our *Help Us Grow Their Future, A Capital Campaign for Pitt Academy*. This provided an exciting opportunity to help Pitt Academy build a permanent new home, where children with special needs and learning differences could continue to reach their full academic, creative and social potential. The campaign was launched in January of 2014 and pledges are still being accepted. Currently we have raised approximately \$1,000,000.00 towards the total campaign goal. This campaign has helped pay the debt of the schools relocation and the buildings new addition.
- New Location:** Since Pitt Academy’s founding in 1949, the school has moved nearly a half-dozen times to leased space. Last October the school purchased the former Westport Road Christian Church property at 7515 Westport Road. This property has approximately four acres and exceeds 15,000 square feet. Part of the sales agreement entailed that the Church’s congregation can stay for a total of three years and use the space to host services and church related events. The new location currently has 70 students enrolled. Pitt Academy employs eight teachers, multiple teaching assistants and a handful of administrators.



Governance

Board of Directors

Executive Officers:

Steve DeGaris, President
Kevin Massey, Vice President
Kim Massey, Treasurer
Linda Hare, Secretary

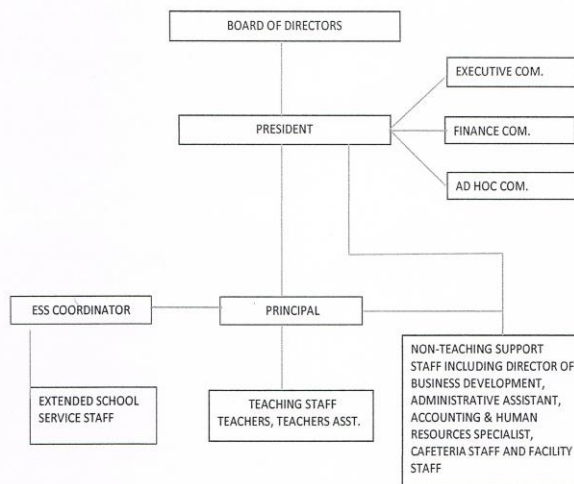
Members:

Rev. John Allen
Sister Barbara Bir
Harriet Blankenship
Betsy Chandler
Carolyn Douglas
Stacy Herdt
Mary Lipscomb
Dan Moyers
Chelsea Painter
Tony Perito
Michael Walls
Laura Wathen

Non-voting Members:

Renee Doty
Jennifer Orberon

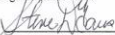
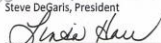
PITT ACADEMY ORGANIZATIONAL CHART



1. The Principal has sole management and hire and fire authority over all the teaching staff.
2. The Board of Directors has sole management and hire and fire authority over the Principal.
3. The Board of Directors has sole hire and fire authority over the non-teaching support staff.
4. The Board of Directors President and the Principal share management authority over the non-teaching support staff. If there is a disagreement between the Board President and the Principal concerning management of the non-teaching support staff, the Board of Directors shall decide the issue.

CERTIFICATE OF ACTION

It is hereby certified that the foregoing are the duly elected and qualified President and Secretary of The Parent-Teachers Organization for Mentally Handicapped Children, Inc., d.b.a. "Pitt Academy" and that on the 18th day of July, 2014, at a regular meeting of the Board of Directors of the corporation, motion was made to repeal and replace the Bylaws of the corporation and approve this Organizational Chart


Steve DeGaris, President

Linda Hare, Secretary

Finances

Through the year, the finances of the school remained stable, with some growth. The school's fiscal year runs from July 1st through June 30th.

The audited totals for July 1, 2014 through June 30, 2015 are as follows:

Summary of Finances

TOTAL REVENUES: \$1,202,813.00

Education Program Services Expenses: \$571,973.00

Administrative Supporting Services Expenses: \$155,722.00

Fundraising Expenses: \$11,235.00

TOTAL EXPENSES: \$738,930.00

BALANCE FOR YEAR: \$463,883.00

NET OF ALL ASSETS END OF YEAR: \$1,077,063.00

Pitt Academy

7515 Westport Rd. Louisville, KY 40222

T (502) 966-6979. | F (502) 962-8878